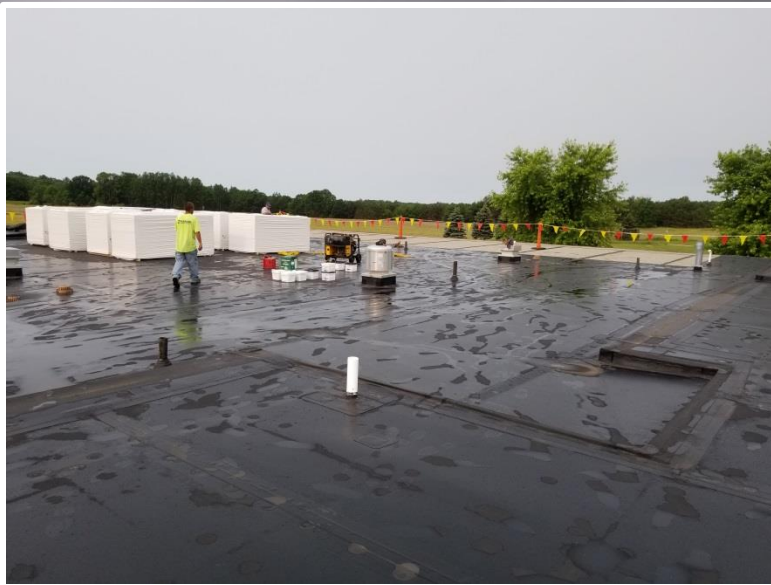




**Summer  
Project  
Update  
BFOC 07.10.19**

# SUMMER 2019 CONSTRUCTION UPDATE

T C A P S · CAPITAL PROJECTS & PLANNING



COURTADE ELEMENTARY

BFOC 07.10.19

# SUMMER 2019 CONSTRUCTION UPDATE

T C A P S · CAPITAL PROJECTS & PLANNING



 Active Listener 

LONG LAKE ELEMENTARY

BFOC 07.10.19

# SUMMER 2019 CONSTRUCTION UPDATE

T C A P S · CAPITAL PROJECTS & PLANNING



SILVER LAKE ELEMENTARY

BFOC 07.10.19

# SUMMER 2019 CONSTRUCTION UPDATE

T C A P S · CAPITAL PROJECTS & PLANNING



**SILVER LAKE ELEMENTARY**

BFOC 07.10.19

# SUMMER 2019 CONSTRUCTION UPDATE

T C A P S · CAPITAL PROJECTS & PLANNING



WILLOW HILL ELEMENTARY

BFOC 07.10.19

# SUMMER 2019 CONSTRUCTION UPDATE

T C A P S · CAPITAL PROJECTS & PLANNING

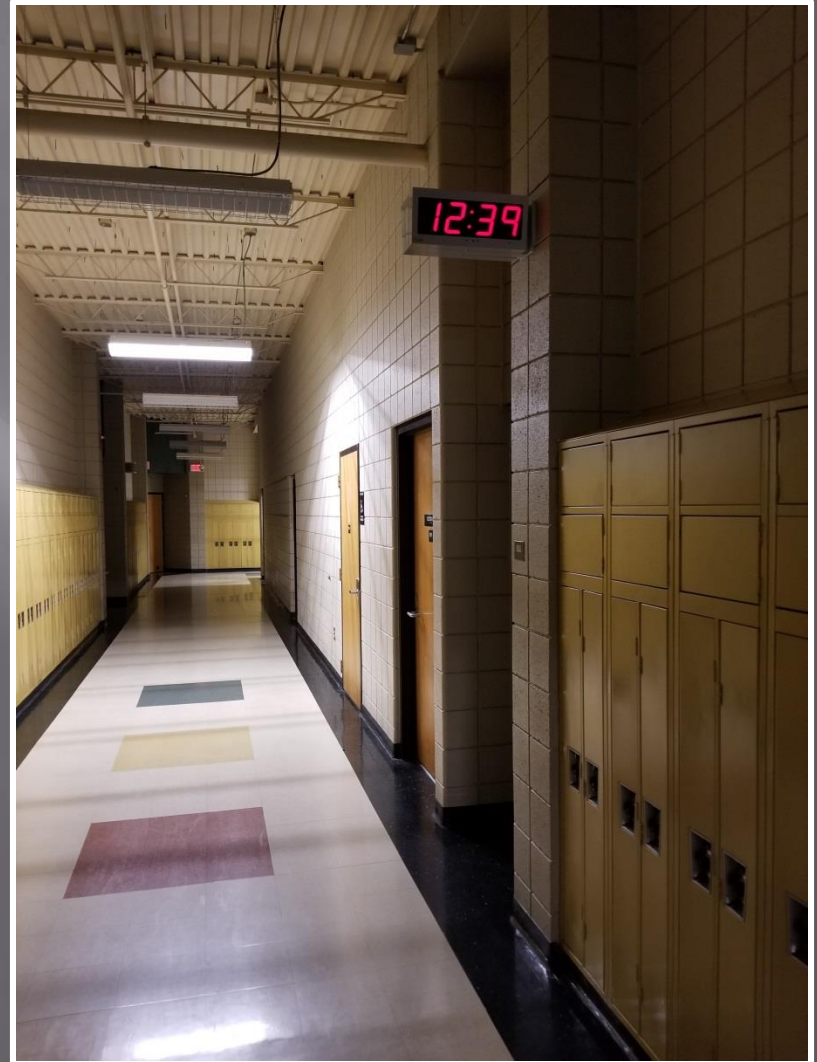


WILLOW HILL ELEMENTARY

BFOC 07.10.19

# SUMMER 2019 CONSTRUCTION UPDATE

T C A P S · CAPITAL PROJECTS & PLANNING



EAST MIDDLE SCHOOL

BFOC 07.10.19



# SUMMER 2019 CONSTRUCTION UPDATE

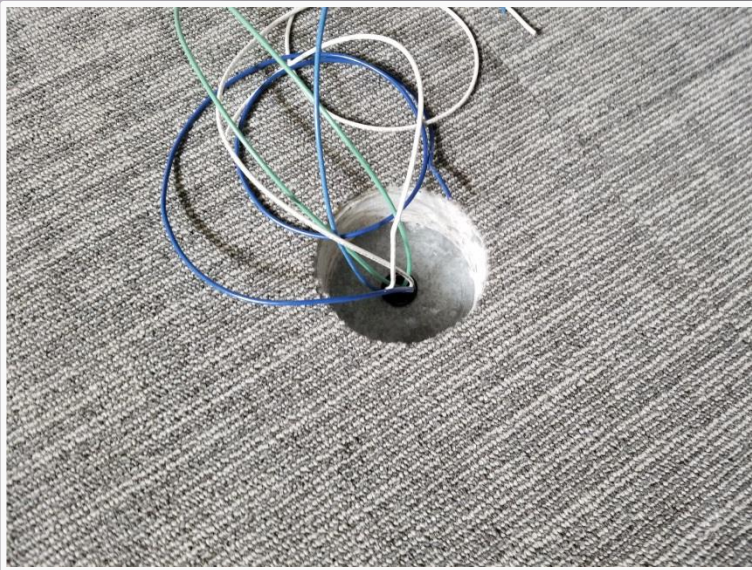
T C A P S · CAPITAL PROJECTS & PLANNING



**WEST MIDDLE SCHOOL**

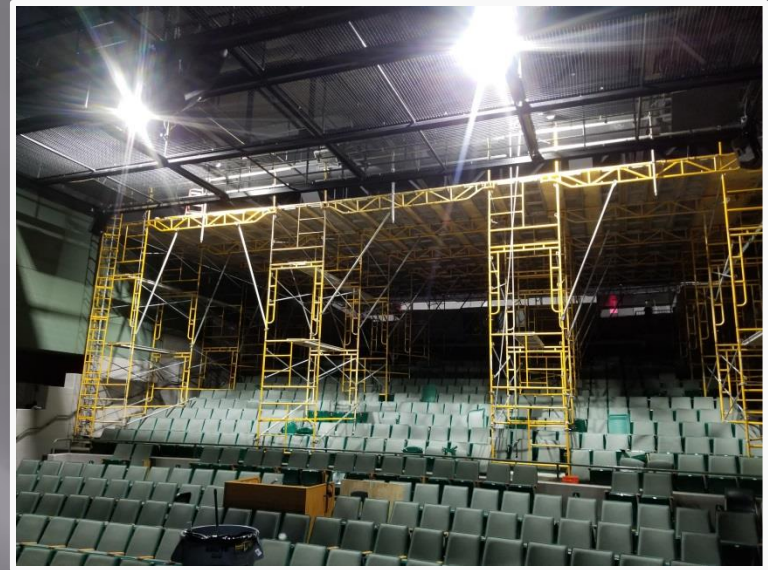
# SUMMER 2019 CONSTRUCTION UPDATE

T C A P S · CAPITAL PROJECTS & PLANNING



# SUMMER 2019 CONSTRUCTION UPDATE

T C A P S · CAPITAL PROJECTS & PLANNING



# Technology Summer 2019

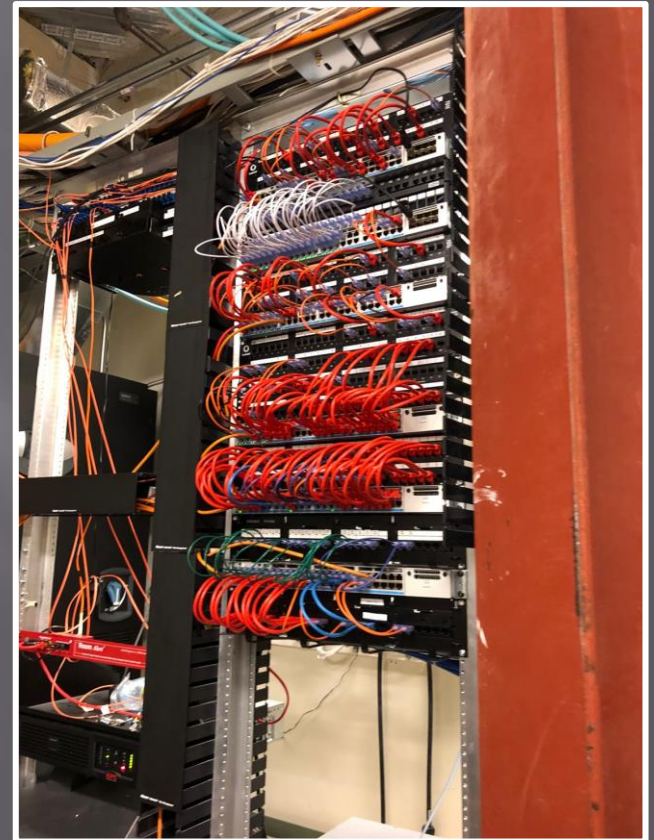
## Switch Upgrades

**This concludes the final phase of the district switch upgrade project.**

The old style cable management systems have been updated to use one-foot jumpers which allow the switches more room to “breathe” in addition to added efficiency when locating specific ports.



Before



After

# Installation of Secondary Furniture

Week of:

July 15 - WSH

July 22 - WMS

July 29 - EMS &  
TCHS

August 6 - CHS

