

Board Finance & Operations Committee

December 11, 2019

Capital Projects Update

2019 CONSTRUCTION UPDATE

T C A P S - CAPITAL PROJECTS & PLANNING



2019 CONSTRUCTION UPDATE

T C A P S - CAPITAL PROJECTS & PLANNING



SILVER LAKE ELEMENTARY

12.11.19

2019 CONSTRUCTION UPDATE

T C A P S - CAPITAL PROJECTS & PLANNING



WEST MIDDLE SCHOOL

12.11.19

2019 CONSTRUCTION UPDATE

T C A P S - CAPITAL PROJECTS & PLANNING



UPCOMING PROJECTS

T C A P S • CAPITAL PROJECTS & PLANNING

Source Department	District Purchases/Bids	Estimated Cost	Estimated timeframe for presenting to BOE	Fund Source
Capital Projects	Thirlby Renovation	\$1,500,000	Dec 2019	Bond
Transportation	Bus Replacement	\$1,050,000	Jan 2020	Bond
Capital Projects	Digital Clock Installations at WSH, CHS, TCHS, SL, CO, TH	\$200,000	Jan 2020	Bond
Capital Projects	West Middle School Bleacher Replacement (gyms)	\$140,000	Jan 2020	Bond
Music	Band Uniforms for Central and West Senior High	\$153,125	Jan 2020	General Fund
Technology	Staff Laptops – District Wide	\$1,540,000	Jan 2020	Bond
Source Department	Upcoming Projects	Estimated Cost	Estimated timeframe for presenting to BOE	Fund Source
Capital Projects	Blair & Westwoods Elementary Renovations	\$1,400,000	Feb 2020	Bond
Capital Projects	Coast Guard Athletic Fields	\$4,500,000	Feb 2020	Bond
Capital Projects	Willow Hill Phase II	\$500,000	Feb 2020	Bond
Capital Projects	Demolition of Coast Guard Warehouse Building	\$250,000	Feb 2020	Bond
Capital Projects	Security System Upgrade	\$400,000	March 2020	Bond
Capital Projects	West Middle School Phase II	\$1,600,000	March 2020	Bond
Capital Projects	Elementary Furniture	\$900,000	March 2020	Bond
Capital Projects	New Facilities Garage	\$500,000	March 2020	Bond
Capital Projects	Central Grade Restroom Renovation	\$250,000	March 2020	Bond
Capital Projects	Traverse City High School Gym & Restroom Renovation	\$200,000	March 2020	Bond
Technology	Wireless Upgrade	\$160,000	March 2020	Bond
Capital Projects	West Middle School Irrigation on Athletic Fields	\$80,000	March/April 2020	Bond
Technology	One2World – Secondary	\$650,000	April 2020	Bond
Technology	Video/Multimedia PCs for CHS, WSH	\$100,000	April 2020	Bond
Technology	Server Upgrade	\$600,000	April 2020	Bond

Capital Projects & Planning

Safe Routes to School Update

SAFE ROUTES TO SCHOOL

The City of Traverse City

“... In July of 2018, the City received notification from the Michigan Department of Transportation that the multi-school \$2M Safe Routes to School (SRTS) infrastructure grant received conditional commitment for 4.9 miles of linear trail/sidewalk expansion, bike lanes, traffic calming, crosswalk improvements and signage upgrades. The City hired Landtech in early 2019 to conduct topographic surveying and mapping. Once survey data is received, City Staff will begin design work to satisfy the conditions outlined in the Conditional Commitment which include historical, environmental and technical approvals. The proposed project schedule includes construction in summer of 2020 for all locations in the Safe Routes to School project scope.”

<http://www.traversecitymi.gov/sidewalk.asp>

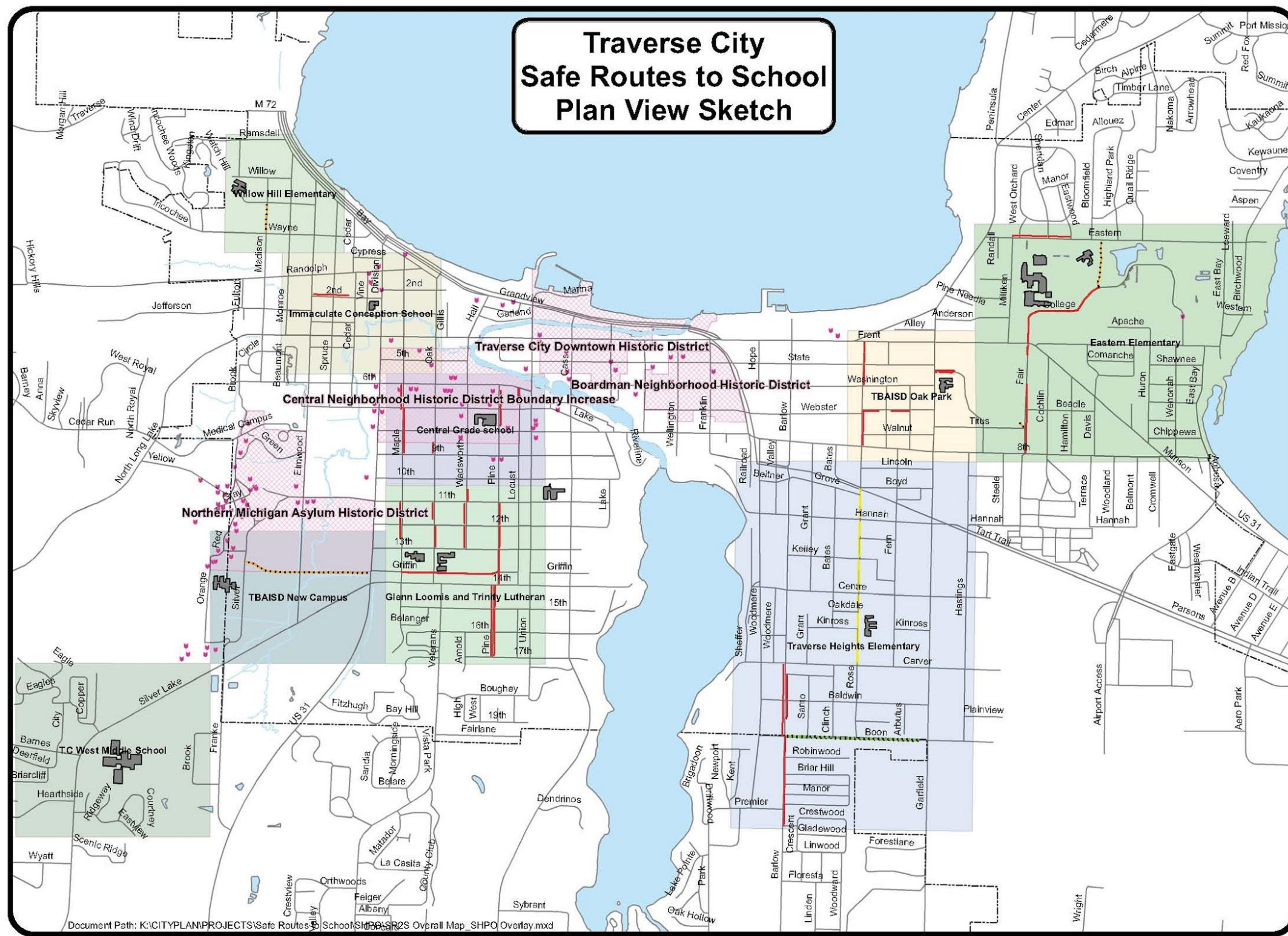
SRTS Notes:

- TCAPS involved in previous campaigns
- Current campaign started in 2016
- The City is gathering easements and developing engineering drawings
- Grant requires all improvements must be complete by the end of 2020

TEN PARTICIPATING SCHOOLS

- TCAPS Montessori School at Glenn Loomis
- TCAPS Willow Hill Elementary
- TCAPS Oak Park Campus
- TCAPS Central Grade School
- TCAPS Eastern Elementary School
- TCAPS Traverse Heights Elementary
- TCAPS West Middle School
- GTACS Immaculate Conception Elementary School
- Trinity Lutheran School
- TBAISD New Campus School

SAFE ROUTES TO SCHOOL



**Traverse City
Safe Routes to School
Plan View Sketch**

City of Traverse City
Department of Engineering

- Legend**
- SAFE ROUTES TO SCHOOL**
- SIDEWALKS
 - TRAILS
 - BIKE LANES (Rose St.)
 - TRAFFIC CALMING MARKINGS (Boon St.)
- CITY BOUNDARY**
- SCHOOLS**
- Central Grade School
 - Eastern Elementary
 - Glenn Loomis and Trinity Lutheran
 - Immaculate Conception School
 - T.C. West Middle School
 - TBAISD New Campus
 - TBAISD Oak Park
 - Traverse Heights Elementary
 - Willow Hill Elementary
- SHPO DATABASE**
- SHPO Historic Sites
 - SHPO Historic Districts

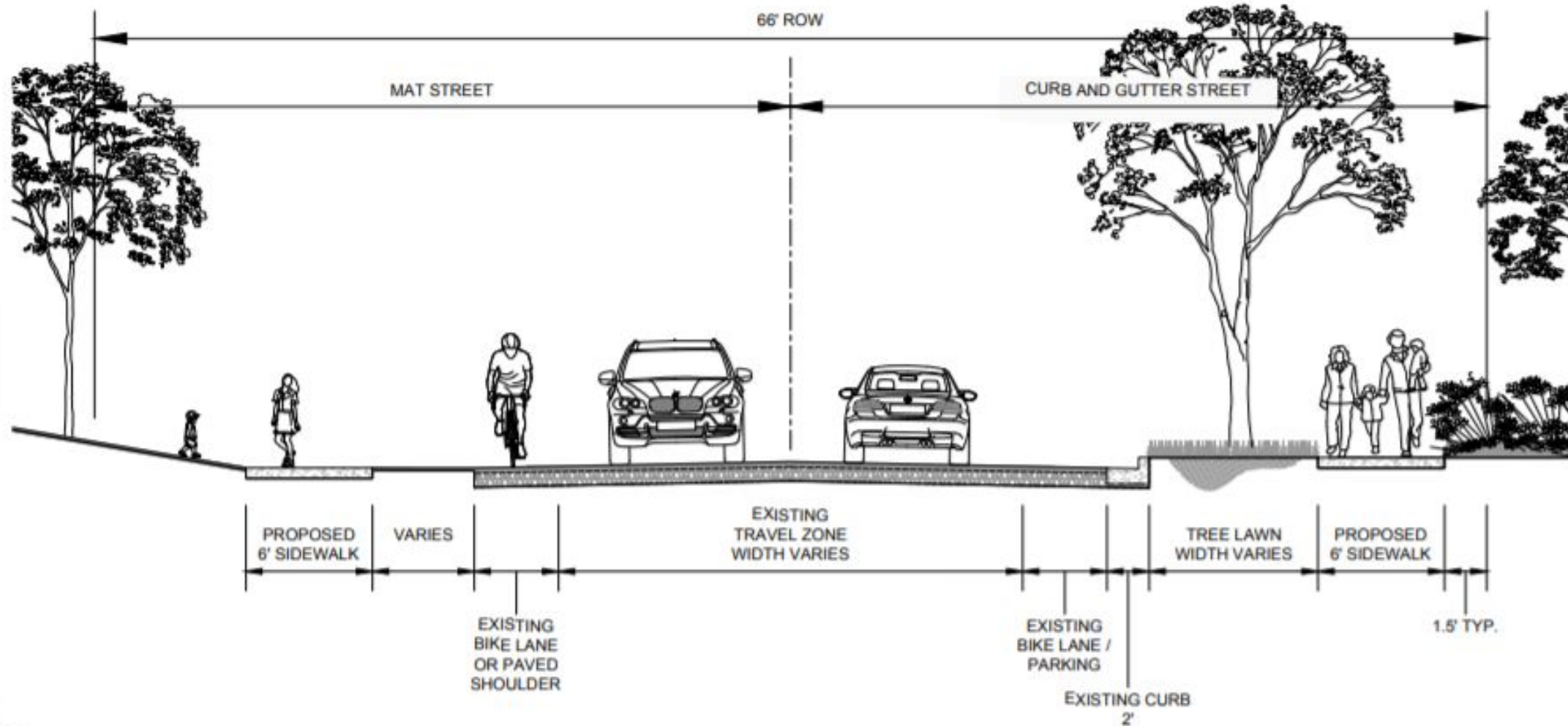


1 inch = 1,600 feet
BMG
3/26/2018

This map is based on digital databases from the City of Traverse City. Traverse City cannot accept any responsibility for errors, omissions or positional accuracy. There are no warranties expressed or implied.

Document Path: K:\CITYPLAN\PROJECTS\Safe Routes to School\SHPO\SR2S Overall Map_SHPO Overlay.mxd

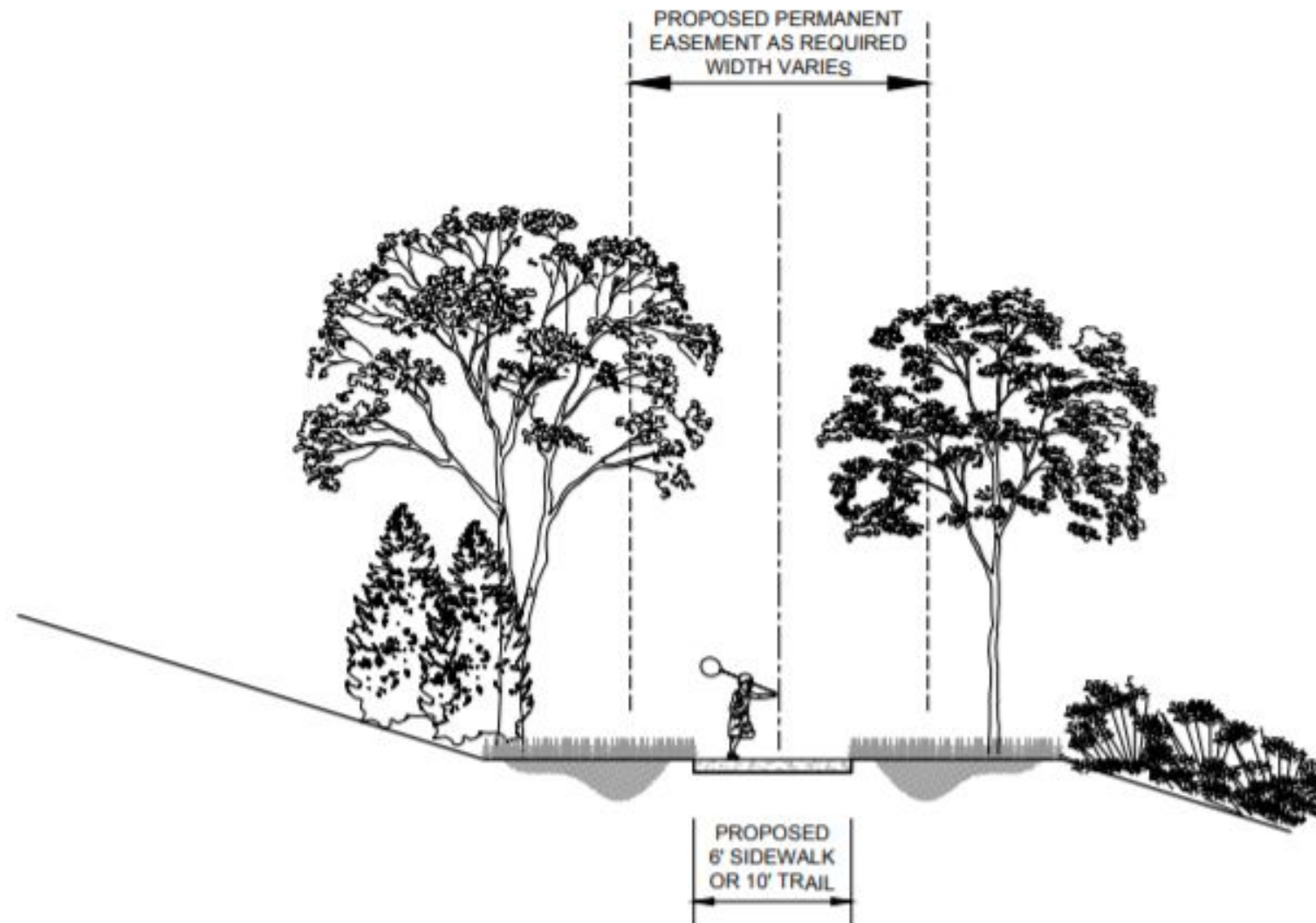
Typical	School	Street	From	To
1	Eastern Elementary	Eastern Ave. (Northside Sidewalk)	Milken Dr.	Eastwood Ave.
1	Eastern Elementary	College Dr.	E. Front St.	Proposed Trail (Typical 2)
1	Eastern Elementary	Fair St. (Eastside Sidewalk)	E. Front St.	E. Eighth St.
1	TBA-ISD Oak Park	Rose St. (Eastside Sidewalk)	E. Eighth St.	E. Front St.
1	TBA-ISD Oak Park	Webster St. (Southside Sidewalk)	Rose St.	Michigan Ave.
1	Traverse Heights Elementary	Barlow St. (Westside Sidewalk)	Carver St.	Boon St.
1	Traverse Heights Elementary	Barlow St. (Eastside Sidewalk)	Carver St.	Gladebrook Ln.
1	Glenn Loomis and Trinity Lutheran	Pine St. (Eastside & Westside Sidewalks)	18th St.	17th St.
1	Glenn Loomis and Trinity Lutheran	Pine St. (Eastside Sidewalk)	10th St.	14th St.
1	Glenn Loomis and Trinity Lutheran	Wadsworth St. (Eastside Sidewalk)	20th St.	11th St.
1	Glenn Loomis and Trinity Lutheran	Wadsworth St. (Westside Sidewalk)	10th St.	13th St.
1	Glenn Loomis and Trinity Lutheran	Oak St. (Westside Sidewalk)	10th St.	12th St.
1	Glenn Loomis and Trinity Lutheran	Oak St. (Eastside Sidewalk)	12th St.	13th St.
1	Glenn Loomis and Trinity Lutheran	Maple St. (Westside Sidewalk)	10th St.	13th St.
1	Central Grade School	Pine St. (Eastside Sidewalk)	8th St.	8th St.
1	Central Grade School	Oak St. (Westside Sidewalk)	8th St.	9th St.
1	Central Grade School	Maple St. (Westside Sidewalk)	8th St.	7th St.
1	Central Grade School	Maple St. (Eastside Sidewalk)	7th St.	9th St.
1	Immaculate Conception School	Second St. (Northside Sidewalk)	Elmwood Ave.	Cedar St.



CITY OF TRAVERSE CITY
SAFE ROUTES TO SCHOOL
CROSS SECTIONS - TYPICAL 1

Revised/Date	Drawn
03-26-2019	
BY	
NONE	
1 OF 1	

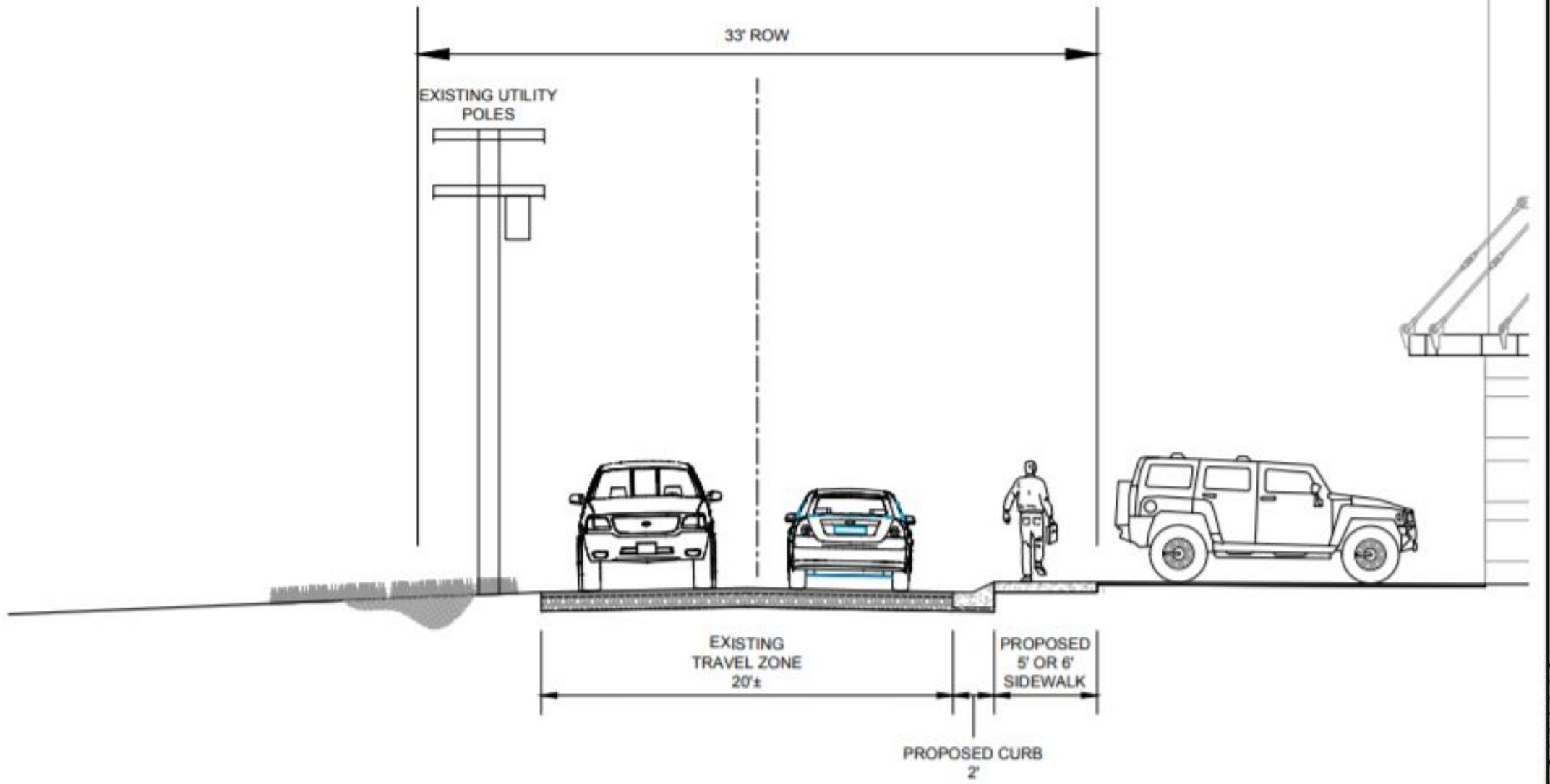
Typical	School	Street	From	To
2	Eastern Elementary	Multi-use trail	College Dr. (Typical 1)	Eastern Ave.
2	Eastern Elementary	Multi-use trail	Fair St. / Titus St.	Civic Center Pathway
2	TBA-ISD New Campus	Multi-use trail	Division St.	Silver Dr.
2	Willow Hill Elementary	Sidewalk	Wayne St.	Hill St.



CITY OF TRAVERSE CITY
SAFE ROUTES TO SCHOOL
CROSS SECTIONS - TYPICAL II

Revison/Change	Date
03-30-2018	

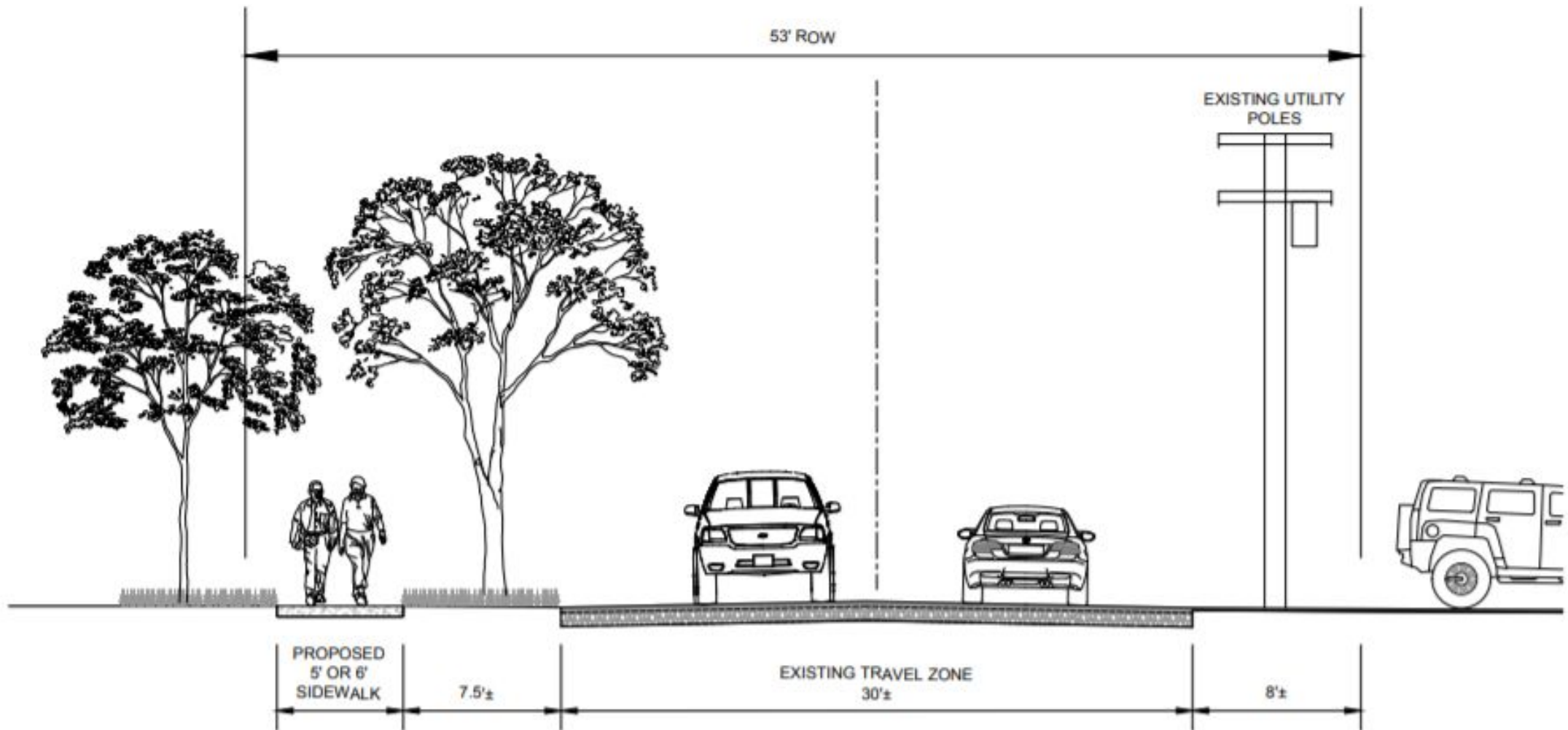
Typical	School	Street	From	To
3	Glenn Loomis and Trinity Lutheran	Griffin St.	Pine St.	Maple St.



CITY OF TRAVERSE CITY
SAFE ROUTES TO SCHOOL
CROSS SECTIONS - TYPICAL III

Revised	Date
03-26-2018	
1 OF 1	

Typical	School	Street	From	To
4	Central Grade School	Locust St.	6th St.	7th St.

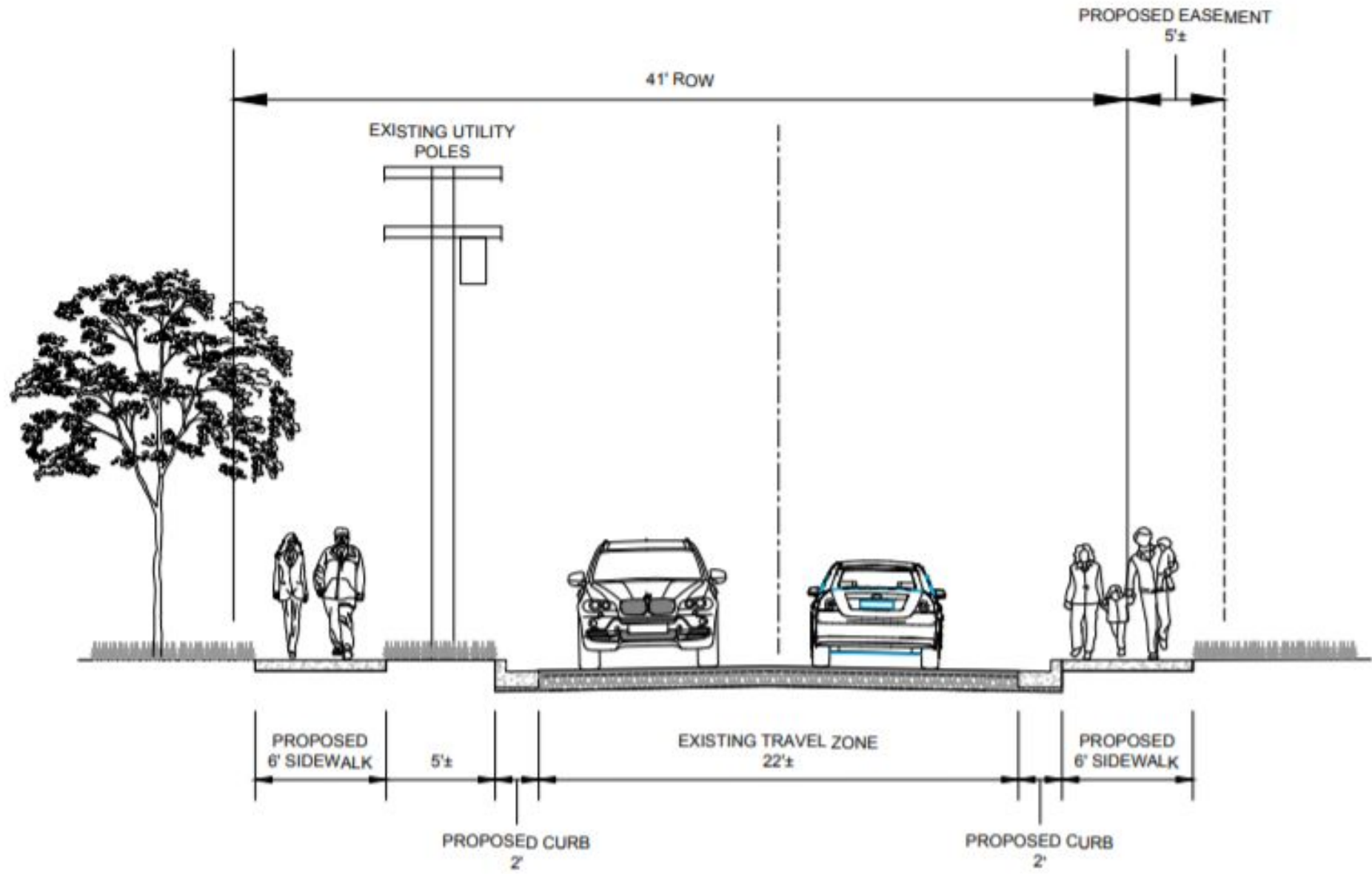


CITY OF TRAVERSE CITY
SAFE ROUTES TO SCHOOL
CROSS SECTIONS - TYPICAL IV

Revised/	Drawn

03-20-2018
AWY
NONE
1 OF 1

Typical	School	Street	From	To
5	TBA-ISD Oak Park	W. Civic Center Dr.	Garfield Ave.	Existing Pathway



TRAVERSE CITY
MICHIGAN
POPULATION: 14,500
ESTABLISHED: 1878

**CITY OF TRAVERSE CITY
SAFE ROUTES TO SCHOOL
CROSS SECTIONS - TYPICAL V**

Revised	By
03-26-2018	

TCAPS - CAPITAL PROJECTS & PLANNING

SAFE ROUTES TO SCHOOL

City of Traverse City
Department of Engineering

Legend

- ADA TILE/RAMP IMPROVEMENTS
- IN STREET STOP FOR PEDESTRIAN SIGN
- SPECIAL EMPHASIS CROSSWALK MARKINGS
- STANDARDIZED SCHOOL ZONE SIGNS & ON-STREET PAINT
- LIGHTING/CROSSWALK UPGRADING

SAFE ROUTES TO SCHOOL SIDEWALKS

TYPICAL 2

EXISTING SIDEWALKS

SCHOOLS

SHPO DATABASE

SHPO Historic Sites

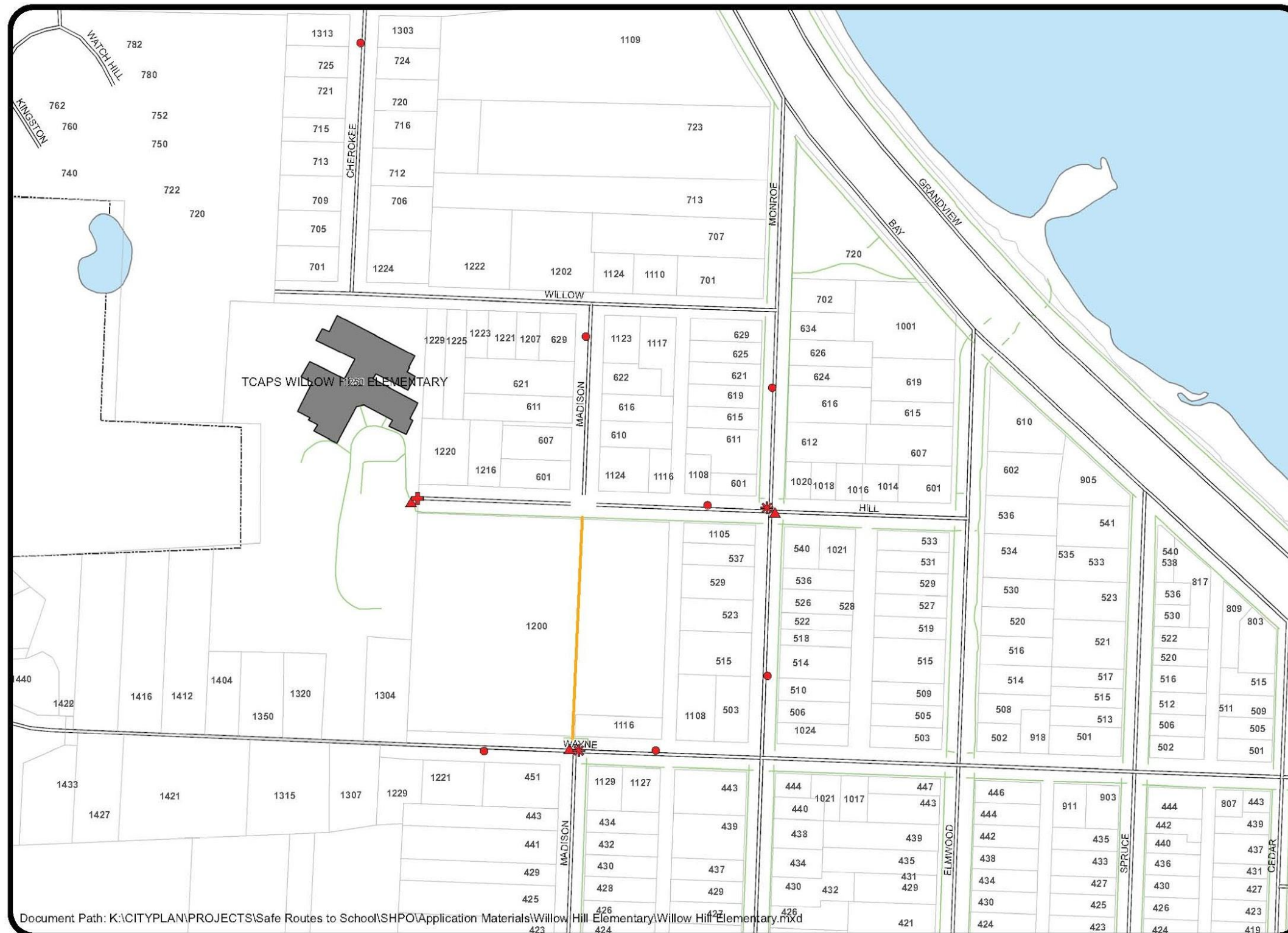
SHPO Historic Districts

Safe Routes to School
Willow Hill Elementary



1 inch = 200 feet
BMG
3/1/2018

This map is based on digital databases from the City of Traverse City. Traverse City cannot accept any responsibility for errors, omissions or positional accuracy. There are no warranties expressed or implied.



Document Path: K:\CITYPLAN\PROJECTS\Safe Routes to School\SHPO\Application Materials\Willow Hill Elementary\Willow Hill Elementary.mxd

T C A P S - CAPITAL PROJECTS & PLANNING

SAFE ROUTES TO SCHOOL

City of Traverse City
Department of Engineering

Legend

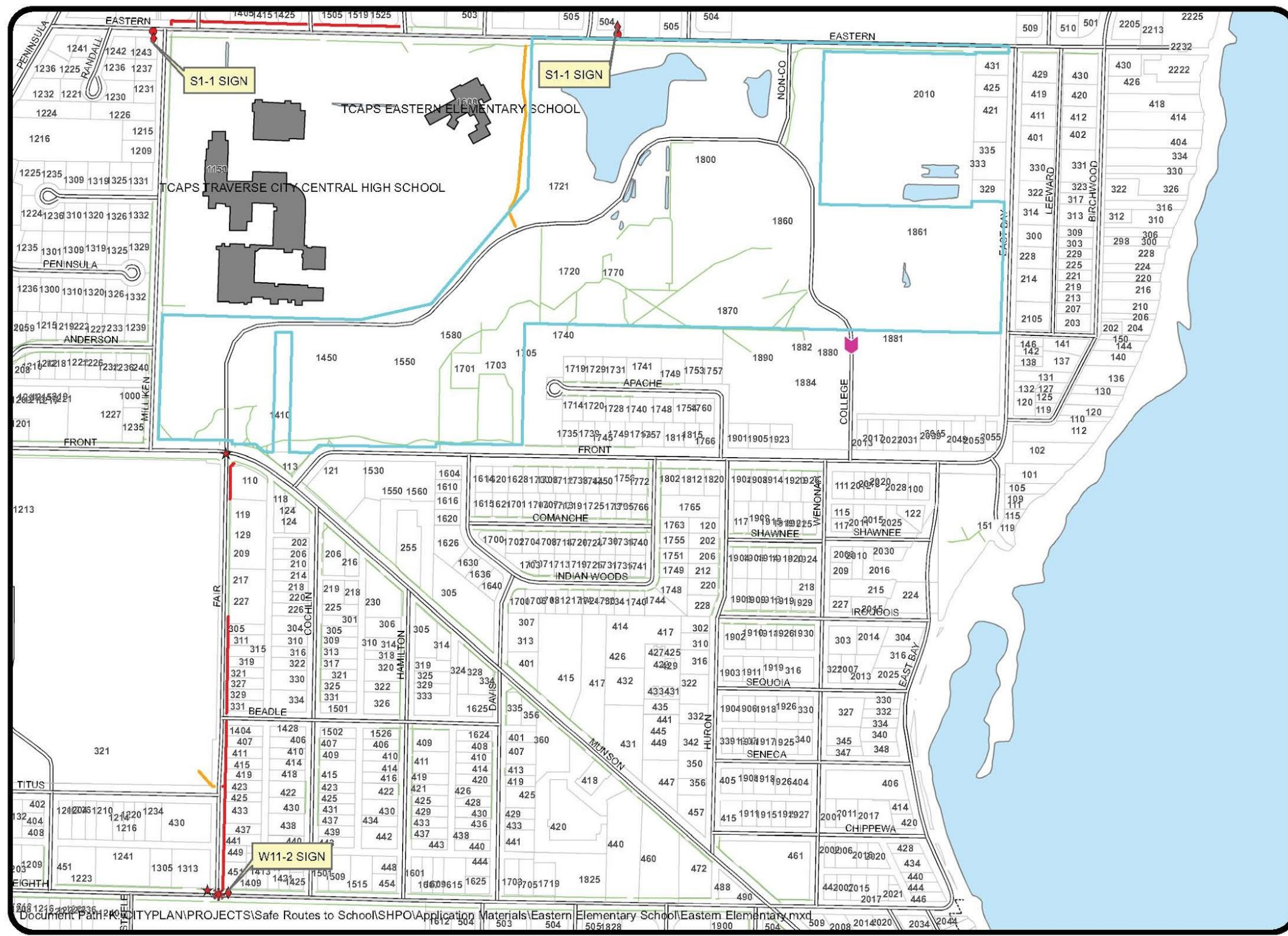
- ADA TILE/RAMP IMPROVEMENTS
 - EMBEDDED LED SIGN
 - SPECIAL EMPHASIS CROSSWALK MARKINGS
 - STANDARDIZED SCHOOL ZONE SIGNS & ON-STREET PAINT
- SAFE ROUTES TO SCHOOL SIDEWALKS**
- TYPICAL 1
 - TYPICAL 2
- EXISTING SIDEWALKS**
-
- SCHOOLS**
-
- SHPO DATABASE**
- SHPO Historic Sites
 - SHPO Historic Districts

Safe Routes to School
Eastern Elementary School



1 inch = 400 feet
BMG
3/1/2018

This map is based on digital databases from the City of Traverse City. Traverse City cannot accept any responsibility for errors, omissions or positional accuracy. There are no warranties expressed or implied.



Document Path: K:\CITYPLAN\PROJECTS\Safe Routes to School\SHPO\Application Materials\Eastern Elementary School\Eastern Elementary.mxd

T C A P S - CAPITAL PROJECTS & PLANNING

SAFE ROUTES TO SCHOOL

City of Traverse City
Department of Engineering

Legend

- ADA TILE/RAMP IMPROVEMENTS
- IN STREET STOP FOR PEDESTRIAN SIGN
- EMBEDDED LED SIGN
- MEDIAN REFUGE ISLAND
- SPECIAL EMP.
- STANDARDIZED SCHOOL ZONE SIGNS & ON-STREET PAINT

SAFE ROUTES TO SCHOOL SIDEWALKS

- TYPICAL 1
- TYPICAL 5

EXISTING SIDEWALKS

-

SCHOOLS

-

SHPO DATABASE

- SHPO Historic Sites
- SHPO Historic Districts

Safe Routes to School
Oak Park School



1 inch = 200 feet
BMG
3/1/2018

This map is based on digital databases from the City of Traverse City. Traverse City cannot accept any responsibility for errors, omissions or positional accuracy. There are no warranties expressed or implied.



Document Path: K:\CITYPLAN\PROJECTS\Safe Routes to School\SHPO\Oak Park\BAISD Oak Park.mxd

OAK PARK

12.11.19

T C A P S - CAPITAL PROJECTS & PLANNING

SAFE ROUTES TO SCHOOL

City of Traverse City
Department of Engineering

Legend

- ADA TILE/RAMP IMPROVEMENTS
- EMBEDDED LED SIGN
- SPECIAL EMPHASIS CROSSWALK MARKINGS
- STANDARDIZED SCHOOL ZONE SIGNS & ON-STREET PAINT

SAFE ROUTES TO SCHOOL SIDEWALKS

- TYPICAL 1

EXISTING SIDEWALKS

-

SCHOOLS

-

SHPO DATABASE

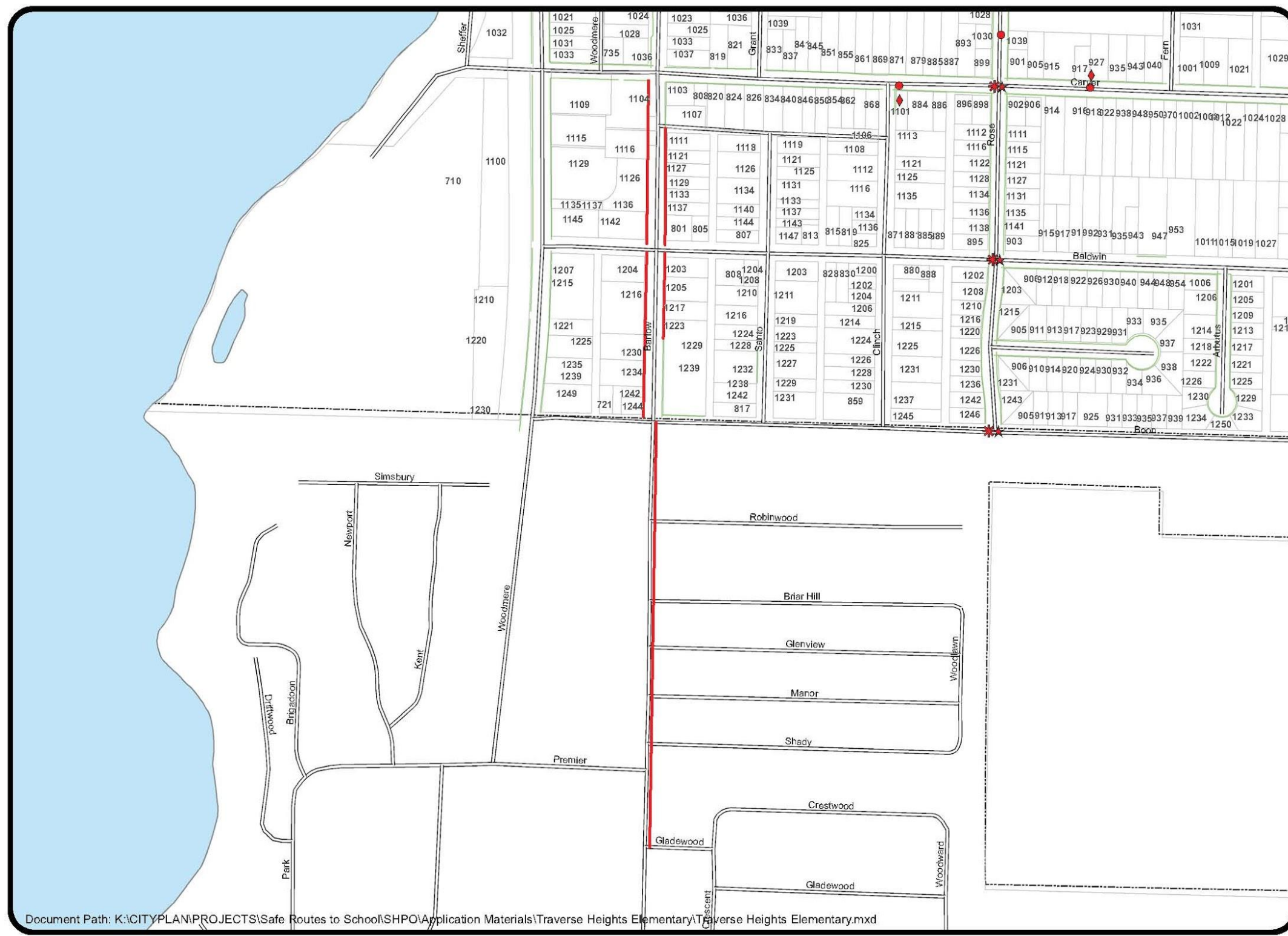
- SHPO Historic Sites
- SHPO Historic Districts

Safe Routes to School
Traverse Heights Elementary School



1 inch = 336 feet
BMG
3/1/2018

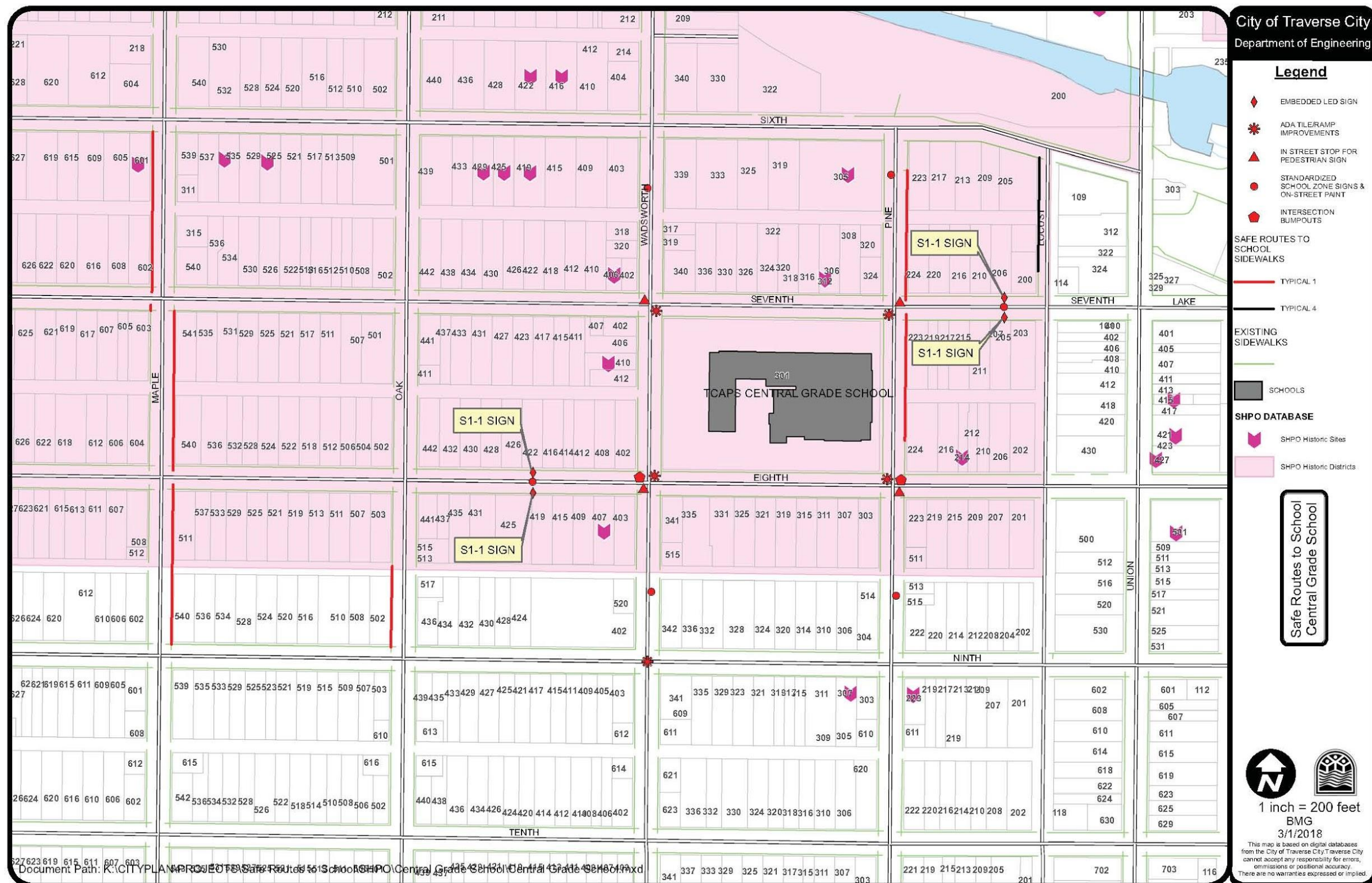
This map is based on digital databases from the City of Traverse City. Traverse City cannot accept any responsibility for errors, omissions or positional accuracy. There are no warranties expressed or implied.



Document Path: K:\CITY\PLAN\PROJECTS\Safe Routes to School\SHPO\Application Materials\Traverse Heights Elementary\Traverse Heights Elementary.mxd

T C A P S - CAPITAL PROJECTS & PLANNING

SAFE ROUTES TO SCHOOL



City of Traverse City
Department of Engineering

Legend

- EMBEDDED LED SIGN
- ADA TILE/RAMP IMPROVEMENTS
- IN STREET STOP FOR PEDESTRIAN SIGN
- STANDARDIZED SCHOOL ZONE SIGNS & ON-STREET PAINT
- INTERSECTION BUMPOUTS

SAFE ROUTES TO SCHOOL SIDEWALKS

- TYPICAL 1
- TYPICAL 4

EXISTING SIDEWALKS

SCHOOLS

SHPO DATABASE

- SHPO Historic Sites
- SHPO Historic Districts

Safe Routes to School
Central Grade School

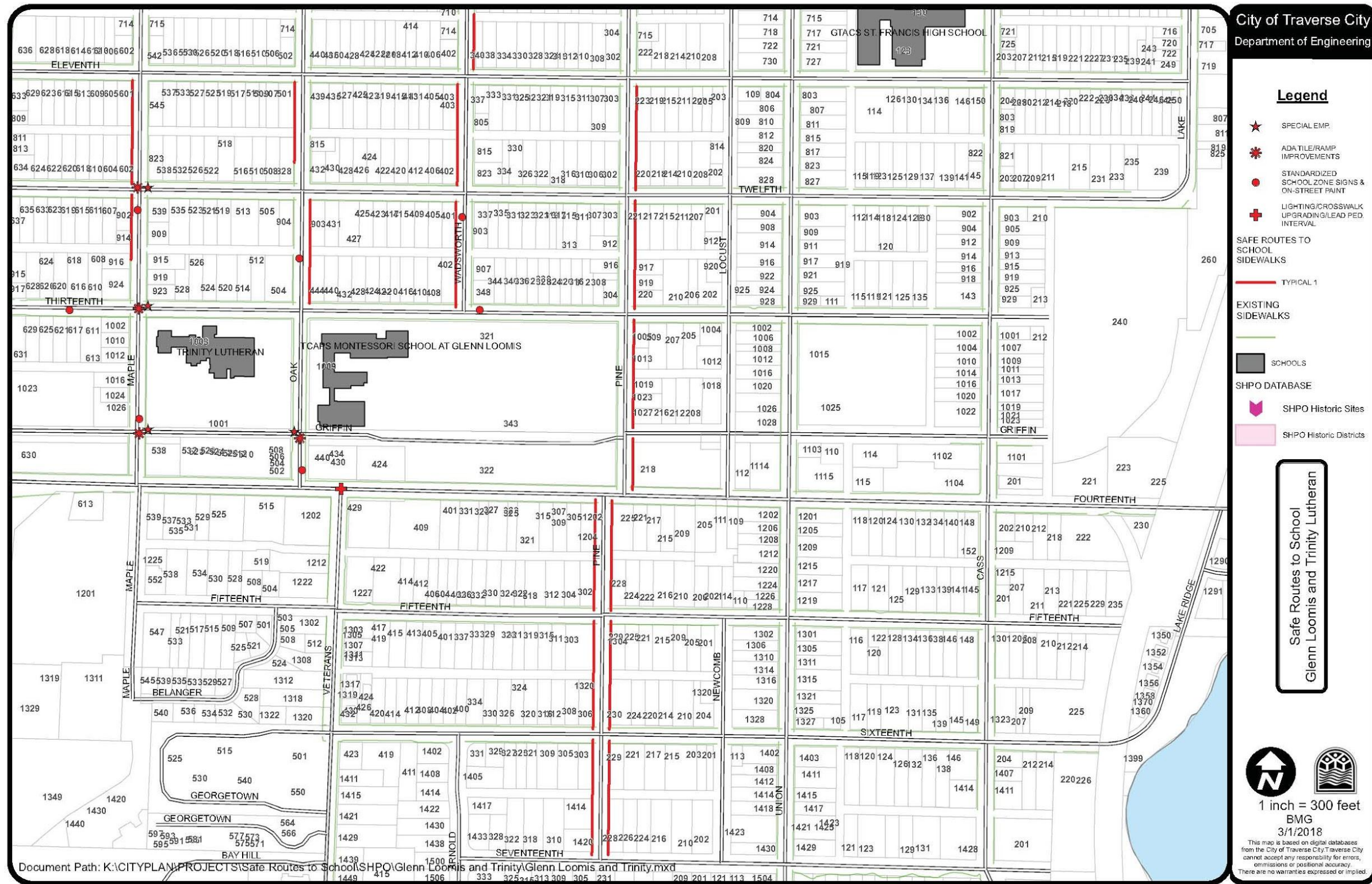
1 inch = 200 feet
BMG
3/1/2018

This map is based on digital databases from the City of Traverse City. Traverse City cannot accept any responsibility for errors, omissions or positional accuracy. There are no warranties expressed or implied.

Document Path: K:\CITY\PLAN\PROJECTS\Safe Routes to School\SHPO\Central Grade School\Central Grade School.mxd

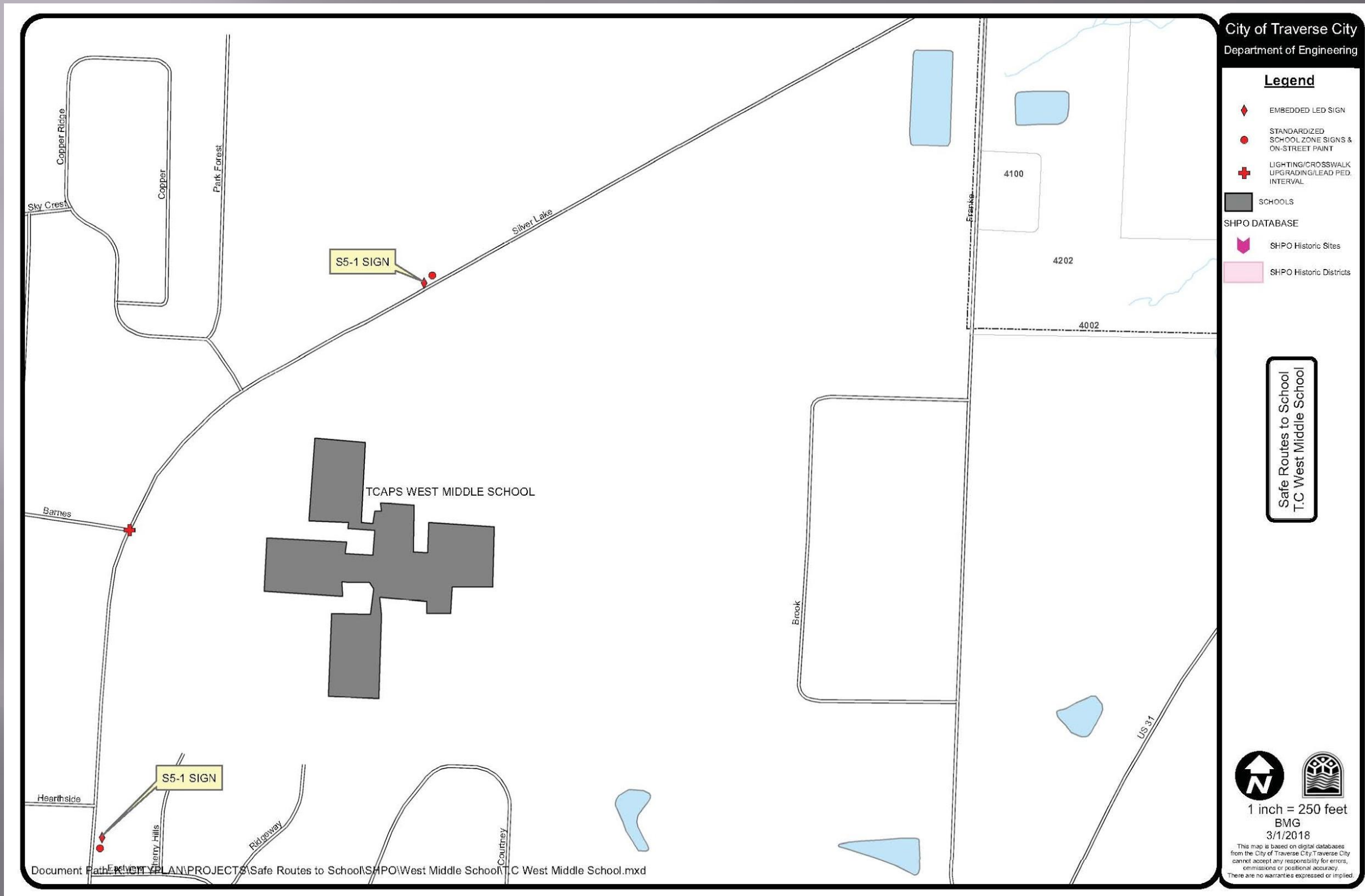
T C A P S - CAPITAL PROJECTS & PLANNING

SAFE ROUTES TO SCHOOL



TCAPS - CAPITAL PROJECTS & PLANNING

SAFE ROUTES TO SCHOOL



City of Traverse City
Department of Engineering

Legend

- EMBEDDED LED SIGN
- STANDARDIZED SCHOOL ZONE SIGNS & ON-STREET PAINT
- LIGHTING/CROSSWALK UPGRADING/LEAD PED. INTERVAL
- SCHOOLS
- SHPO DATABASE**
- SHPO Historic Sites
- SHPO Historic Districts

Safe Routes to School
T.C West Middle School



1 inch = 250 feet
BMG
3/1/2018

This map is based on digital databases from the City of Traverse City. Traverse City cannot accept any responsibility for errors, omissions or positional accuracy. There are no warranties expressed or implied.

Document Path: K:\CITY PLAN\PROJECTS\Safe Routes to School\SHPO\West Middle School\TC West Middle School.mxd

T C A P S - CAPITAL PROJECTS & PLANNING

SAFE ROUTES TO SCHOOL

